

The 3rd JMap conference A success story !

The **Third JMap Conference** was held on November 16, 2006 at l'Ecole des mines de Paris, a prestigious French institution founded by Napoleon in 1783. Situated since 1816 at the heart of the latin quarter, this building located next to the Luxembourg Garden also houses the Museum of Minerals recognized for its systematic collections and wealth of samples. This location was an ideal place to share knowledge and expertise and to present different JMap applications in advanced fields such as: Risk management, GEO-Business, Security and Asset Management (fixed & mobile). The conference was preceded by a technical training session held at the ESGN/IGN.

Because of JMap's success in Europe and the benefits of sharing ideas and projects, the JMap Conferences will be held alternately in America (even years) and in Europe (odd years).

Mark your calendars, the next JMap conference will be held on **September 20th, 2007**, in Montreal and we hope to see you there!

KHEOPS wishes to thank all the participants and lecturers who have helped make this event a success in every respect : Aldo NAPOLI and Julien IRIS, Ecole des mines de Paris; Évelyne BERNIER, Laval University; Pierre LARRAT, Sherbrooke University and Atelis; Jérôme CHEMITTE, MRN; Jean-Charles GÉNOIS, Outsourcé Service; Gérald HORLANDE, I-PORTA ICADE Group; Yannick GROVALET, CMTek; Stéphane CARRIÈRE, Somum Inc.; Dominique GATTO, IFCS Inc.; Tullio Joseph TANZI, Paris Telecom, as well as Eric DUFLOS, Quebec Delegate in Paris; François GAUTHÉ and Musto MITHA from the Canadian Embassy.

The presentations and photos of the 3rd JMap Conference are available on our website. To view or download them, sign-in to 'myJMap' and click on '**Presentations**' (top left) in the '**Documents**' section.

Look for : 'The 2006-2007 development road map' - Jean-Robert Desbiens-Haddad, v.-p. Technologies for KHEOPS.

www.kheops-tech.com



L'Ecole des mines de Paris, novembre 16th, 2006

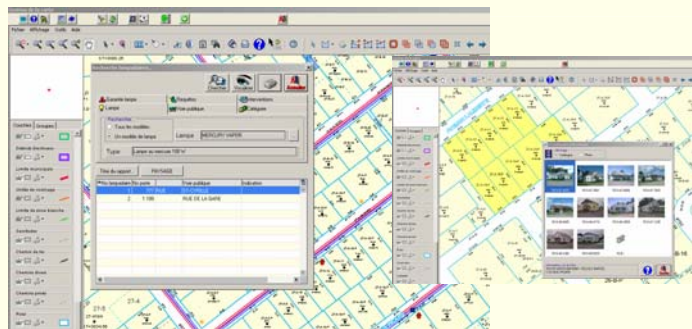
A new alliance reinforces the presence of JMap in the municipal field

KHEOPS and PG Govern have signed a partnership agreement for the integration of JMap into the line of products of PG Govern, an important player on the municipal scene in America, with over 1200 clients located in four Canadian provinces and 24 American states.

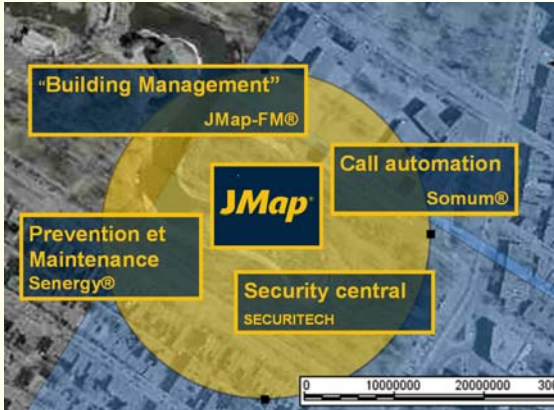
The **JMap-PG™** extension will become an important component of the Municipal Manager and CityAccess®, allowing access to the zoning, urban regulation and to the graphic matrix, 24 hours a day, 7 days a week.

«I am certain that this partnership will be very beneficial for both companies, as well as the municipal community in its entirety, since JMap is the ideal tool for sharing territorial and cadastral information between the various parties.»

– Jacques Charron, President, KHEOPS Technologies.



JMap at the core of an integrated solution for “Building Management”



To serve a growing need for the security and protection of fixed and mobile assets, KHEOPS has teamed up with a network of partners, software editors that have specialized solutions, in order to offer an innovative solution for real estate management.

The corporate information is placed on an interactive map with a direct access to the necessary technologies. **JMap-FM®**, developed by our French partner Outsource Service, is a Facility Management extension, designed for the graphical management of spaces and tenants.

The «Digitized Plans Management», lets you see all plans available at a given location, for viewing, consulting, downloading at a specific scale.

For communicating and establishing emergency plans, we have developed **JMap-Somum**, which gives direct access to SomumSolution®, in order to create a communications list using selection and spacial analysis tools, to communicate quickly and easily with all tenants, thanks to call automation. With regard to security, the **JMap-Royaltech Security** allows you to locate and access on the map intelligent cameras and access devices. Also, a direct link to the virtual headquarters allows you to respond quickly in case of problems.

Finally, the **JMap-Senergy** extension allows direct access to the Senergy® software, created by IFCS and reputed for computer assisted management and maintenance (GMAO), which provides all tools necessary for daily administration (follow-up of interventions, the workload, dispatching of work teams, cost projections, equipment and materials). For further information, or for an online demonstration, contact Michelle Gagné at 514-285-1211, extension 118, or by email at mgagne@kheops-tech.com.

JMap Expert : Personalized openings !

Starting with version 3.0.239, now available for downloads, it is possible to specify a default context that will open as soon as you start JMap. In order to do so, click the default button on the desired context.

The context is a tool for communication and collaboration for users. All parameters, annotations, thematiques and selection criteria will be saved in a context in order to recreate the exact same map as seen on the screen when it was saved. These contexts can then be retrieved and shared with defined JMap users or made public to all.

Briefly ...

New service



KHEOPS is offering a new service of “Webinar” or interactive conferences and personalized demonstrations. If a subject interests you or if you wish to present a session, function or utility of JMap that may be beneficial to the community, get in touch with us at 514 285-1211 extension 118.

Consult the agenda of our new discussion forum at http://kheops-tech.com/forum/forums/show/10_page

JMap Community

We wish to welcome all new members of the JMap community, including Vincennes-Hainault University, the ENSG-IGN, the Society for protection of forests against insects and disease – SOPFIM, The Ecole nationale de Police, The Mission Risque Naturel for insurance compagnies, Taliance, RESA, Staff&Line, I-PORTA I-Cade Group, IFCS, Sécurité Royaltech, Somum, PG Govern (formerly PG Mensys), ProActive Partner, Rodomatique, Rapid Clic, the Nice Airport, the City of Saguenay and the Saguenay Transport Commission.

Send your suggestions to parlons-jmap@kheops-tech.com



KHEOPS Technologies

300 rue du Saint-Sacrement, 114
Montréal, Québec, H2Y 1X4

Téléphone : 514 285-1211
Télécopie : 514 285-1177

www.kheops-tech.com

JMap News is a KHEOPS Technologies publication.

JMap is a registered trademark of KHEOPS Technologies.

All other trademarks belong to their respective owners.

Copyright © KHEOPS Technologies 2007. All rights reserved